

# SOURCEWELL TECHNOLOGIES PVT LTD

Manufacturer of

## Precision Drive shaft & Transmission parts



Specialist in : Manufacturer of All types  
of ***Shaft & Transmission parts*** for  
Industrial Engineering and Automobile  
Company

***Address-***

***SOURCEWELL TECHNOLOGIES PRIVATE LIMITED***

***17/2, Holkar Patil Nagar, Near Fuji Electric  
Company, Holkarwadi, Pune 412308***

# Profile

- Established in the year **2000**, we, “**Sourcewell Technologies**”, are the prominent manufacturers and suppliers of a wide gamut of ***Precision Machined Components***.
- Our organization is also offering **Machining Works** services to the patrons. These services are provided by using the latest machinery & equipment.
- Our products are highly acclaimed by ***the reputed clients*** due to their several features such as high performance, dimensional precision, excellent resistance against corrosion and cost-effectiveness. Further, these components are extensively used in the automobile industry.
- Our components can also be designed as per the specific requirements of clients. Furthermore, the product range that we offer is manufactured in compliance with ***the international standards of quality***.

# Profile Continued....

- Our organization is equipped with a capacious warehouse that assists us in the bulk storage of our product range. Moreover, our team of professionals work in close coordination with the patrons to meet their increasing needs and requirements within the mutually decided time limit. Owing to our impeccable range, we have achieved tremendous satisfaction from different reputed clients e.g. Godrej,CG Konecranes etc.
- Under the guidance of our Mentor and Director , '**Mr. Praveen S. Holkar**', we have been able to carve a sophisticated niche in this domain. His detailed knowledge and vibrant leadership has enabled us to achieve new horizons of success in this industry.

# Product Portfolio

- We are one of the leading organizations engaged in manufacturing and supplying of **Precision Machined Components**.
- Our wide range includes **Precise Drive Shafts up to 1.2m length, Connecting Pin, CNC Aluminum Turned Parts, Metal Nuts, Metal Bolts, Machine Screws and Ferrous Components**.
- Some more products are **Non Ferrous Machined Components, Sheet Metal Pressed Components, Precision Machined Components and Tool Room Machines & Components**. These products are extensively used in the automobile industry.
- Our products are procured by the customers due to their several features such as anti-corrosiveness, perfect finish, durability and corrosion resistance. Furthermore, our product range is in accordance with the industrial & international standards of quality. Owing to all these factors, we have been able to develop a huge client base across the country.

# Our Team

## ➤ **Our Team**

We have appointed a team of skilled & sincere professionals who work in sync with each other to achieve the goals & objectives of the organization.

Our professionals sustain a healthy communication to offer superior quality components to the customers. Owing to the painstaking, untiring and continuous efforts of clients, we have been able to fulfill the bulk & urgent demands of the clients. Further, we also offer consultancy, prototyping and tooling services to clients, due to the expertise & competency of our professionals.

## ➤ **Our team consists of following members:**

- »Procurement Engineer
- »Quality Engineer
- »Warehouse personnel
- »Sales and marketing personnel

## Metal Gear

We are paramount in offering wide range of **Metal Gear** to the customers. These nuts can be availed in varied material such as alloy steel, stainless steel and mild steel. Our products are fabricated using the high grade steel, which is procured from the trusted vendors of the market. Further, these products are in compliance with the international standards of quality. Our range can be availed in various sizes as per the specific needs of patrons. Moreover, these products are anti-corrosive, cost-efficient and have high tensile strength.



## Machined Components

We are instrumental in providing a wide array of **Precision Machined Components** to the valuable clients. Our components are durable, wear & tear resistant and used in various industrial applications. These products can be customized in terms of design, with the assistance of our reliable vendors. Furthermore, our range can be availed at industry leading prices by customers.

**These components hold the following characteristics:**

- Excellent resistance against corrosion
- High performance
- Long lasting





## Tool Room Machines & Components

### Tool Room Machines & Components

We are paramount in providing a wide gamut of **Tool Room Machines & Components**. These are highly reliable and available at affordable prices in market. Our clients who are spread all across the country are highly satisfied with our finest quality range.

Furthermore, our components are manufactured in compliance with the international standards of quality.

**Their various features are given below:**

Durable

Corrosion resistant

High tensile strength



## Tool Machine Work

We are affianced in providing a wide gamut of **Tool Machine Work** services. These are fabricated to meet the varied requirements of clients. Our professionals are experts in their field and assist us in rendering these services in compliance with the international standards of quality. Our services hold high quality and timely execution, owing to the use of advanced machinery & equipment. Furthermore, the professionals make use of CNC machines for machining. Moreover, our valuable clients can avail both miscellaneous machined components and precision machined components from us.



## Special Shaft

Leveraging on the proficiency of our professionals, we are offering **Special Shaft**. These components can be availed in varied specifications as per the needs of clients. Our products are extensively used in the engineering and automobile industries. Furthermore, these are available at competitive market prices and satisfy the several demands of patrons.

**Moreover, our range is renowned in the industry for their various attributes such as the following:**

Wear & tear resistance  
Cost-effectiveness  
Durability



## Special Shaft (Machining)

Clients can avail from us a wide gamut of **Special Shaft (Machining)**. These components are exclusively used in the engineering and automobile industries. Our products can be customized in different sizes as per the specifications mentioned by the customers. Furthermore, these products can be availed at market leading prices.

**The various characteristics of these components are the following:**

- Accurate design
- Wear & tear resistant
- Economical



## Electric Motor Shaft

With our expertise in this domain, we are providing a wide array of **Electric Motor Shaft** to the esteemed patrons. These components are long lasting and fabricated in compliance with standards set by regulatory bodies. Our products can be customized in terms of sizes, shapes and designs as per the specific demands of valuable clients. Moreover, these products can be easily availed from market at the most affordable prices.

**Their several features are given below:**

Dimensionally precise

Durable

Anti-corrosive



## Metal Shaft

We are affianced in providing a wide array of **Metal Shafts** to the valuable patrons. Our bolts are highly durable and extensively used in various equipment. These can be available at competitive market prices and in different sizes & shapes as per the specifications mentioned by the clients. Further, our products are renowned for their high tensile strength and for usage in steeling purposes for dies.

**Their various characteristics are given below:**

Accurate design

Fine finishing

Long lasting



## Machine Shaft

We specialize in offering a wide array of **Machine Shaft** to the clients. These are fabricated using the premium quality raw material and sophisticated technology to assure dimensional accuracy. Our screws are extensively used in several industries for various applications. These can be availed in various specifications at market leading prices. Furthermore, our screws are fine in finish and manufactured in accordance to the international standards of quality.



# ACE Micromatic CNC Super winner





# AMS Micromatic VMC





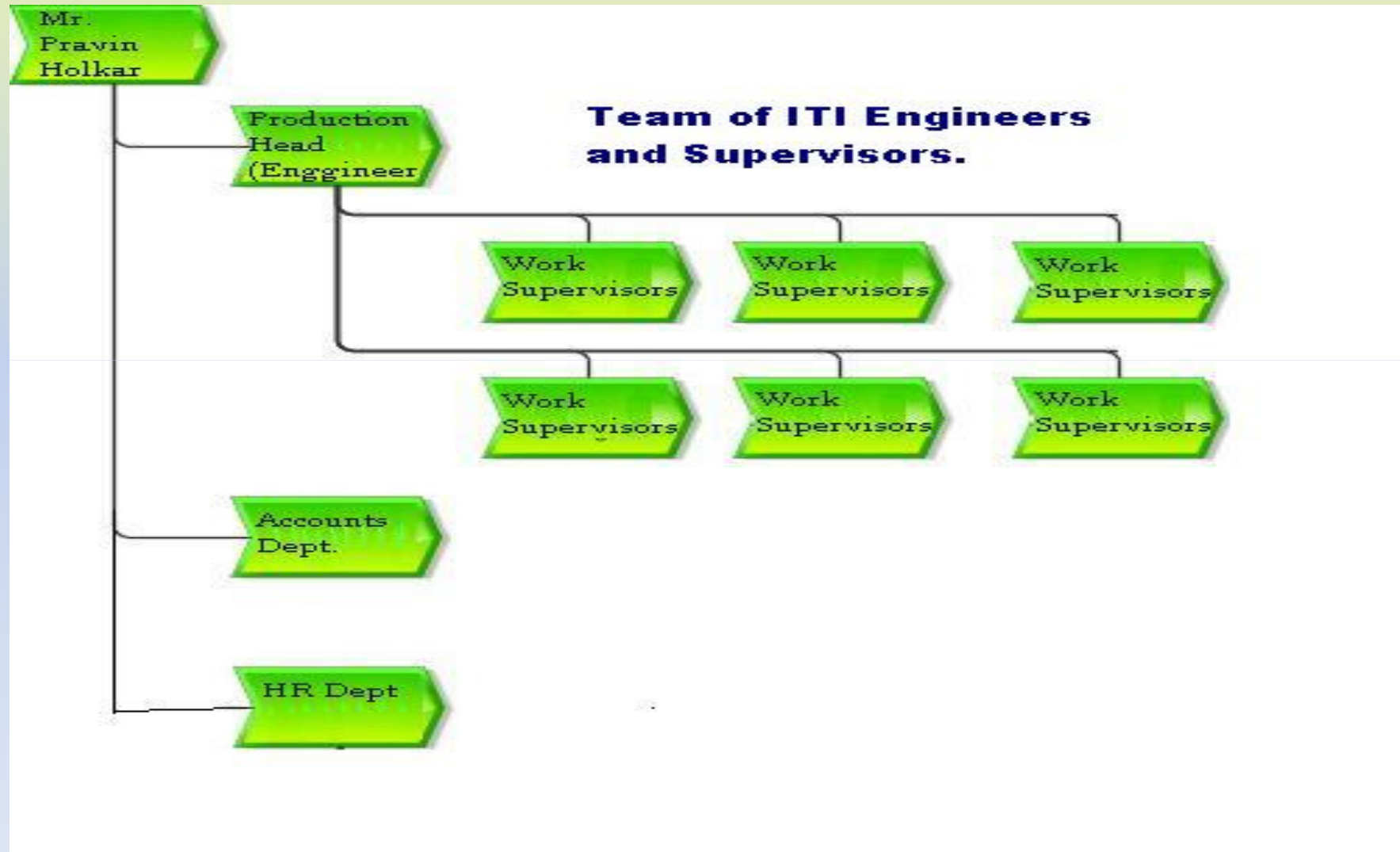


**Customer  
Satisfaction  
is our main  
Vision.**

## **Some Satisfied CLIENT List**

- »Godrej & Boyce Mfg Co Ltd
- »Konecranes and Demag Pvt Ltd
- »Intervolves Poonawalla Ltd
- » Fuji Electric Consul Neowatt Pvt Ltd
- »Crompton Greaves Ltd

# Company Hierarchy




# Banking Partner : HDFC Bank & Corporation Bank

Man Power : 25

Turn over of Company : 5 Cr

Premises Area : 10000 sq ft.

A 3D-rendered thank you card. The card is rectangular with a gold border and a shadow cast to the left. The text "Thank You" is written in blue cursive script.

Thank You